



APPLICATION & ASSEMBLY INSTRUCTION

NAC3FX-W-TOP-L | powerCON® TRUE1® TOP

A APPLICATION INSTRUCTION

APPLICATION:

- The powerCON® TRUE1® TOP system is certified as a connector with breaking capacity according EN/UL/CSA 60320-1.
- It is intended for use as an appliance coupler and interconnection coupler.
- It serves to supply power to an appliance and from an appliance to other equipment.
- To be installed by qualified person only.

CONNECTOR ASSIGNMENT:

APPLIANCE INLET

NAC3MPX-TOP
NAC3MPX-WOT-TOP
Power IN ▶



NAC3FX-W-TOP-L

APPLIANCE OUTLET

NAC3FPX-TOP
NAC3FPX-WOT-TOP
NAC3FPX-ST-TOP
Power OUT ◀



NAC3MX-W-TOP-L

APPLIANCE INLET / OUTLET ▶ Combination



NAC3MX-W-TOP-L

▶ powerCON® TRUE1® TOP line is full backward compatible with the preceding powerCON® TRUE1® products.

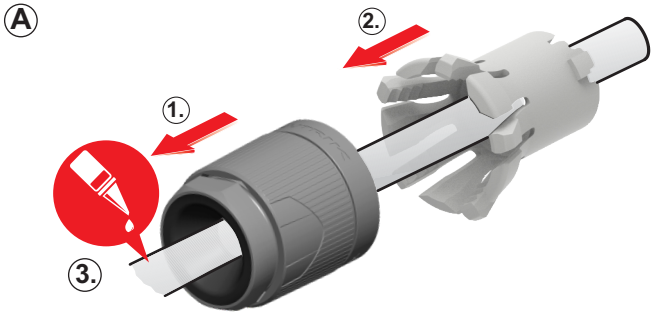
Approval based:	IEC/EN 60320-1 <input checked="" type="checkbox"/>	UL 60320-1 CAN/CSA-C22.2 No. 60320-1 <input checked="" type="checkbox"/>
Rating:	250 V ac / 16 A	250 V ac / 20 A
Wire size:	2.5 mm ²	14 - 12 AWG
Cable O.D.:	10.0 - 16.0 mm (0.39 - 0.63")	10.0 - 16.0 mm (0.39 - 0.63")

CABLE LIST

Cable: IEC/EN 60320-1	3 x 2.5 mm ²		
■ H07RN-F	<input checked="" type="checkbox"/>		-
Cable: UL 60320-1, CAN/CSA-C22.2 No. 60320-1		14/3 AWG	12/3 AWG
■ SOOW	-	<input checked="" type="checkbox"/>	<input checked="" type="checkbox"/>
■ SJOOW	-	-	<input checked="" type="checkbox"/>



B ASSEMBLY INFORMATION



Place the bushing (1) and chuck (2) over the cable.

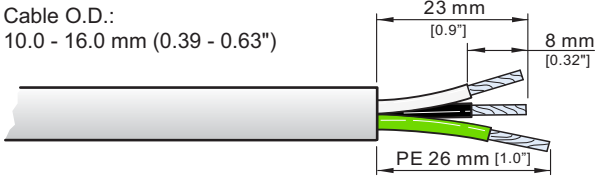
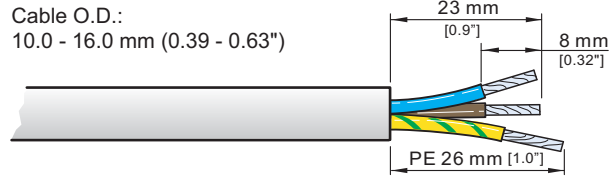
Important: Chuck and Bushing cannot be placed over the cable after the assembly of the insert.

(3) For easier assembly please use a cable lubricante.

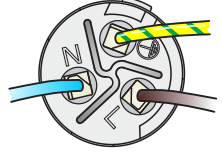
B

IEC/EN 60320-1

UL60320-1
CAN/CSA-C22.2 No. 60320-1

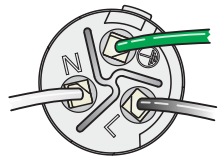


C IEC/EN 60230-1



Torx size T8
Torque Value 0.7 Nm
(6.2 inch pound / 0.52 lb.ft)

UL60320-1
CAN/CSA-C22.2 No. 60320-1

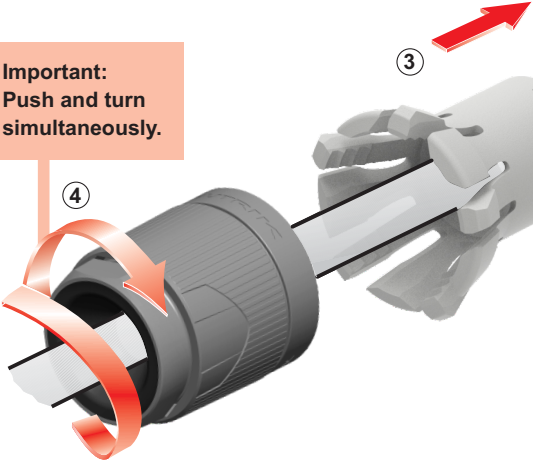


Slide the cable into the contacts and clamp with the screw with Torx size T8.

Typical Wiring	IEC/EN 60230-1	UL60320-1 CAN/CSA-C22.2 No. 60320-1
L ⇒	brown	black
N ⇒	blue	white
⊥ ⇒	green/yellow	green

D

Important:
Push and turn simultaneously.



Position chuck (3) on insert (1).
Slide insert (1) with chuck (3) together into housing (2).

Important: Align the chuck by positioning the nose into keyway.

Slide bushing (4) over chuck (3).

E

27 mm 1 1/8 inch Hex bit

Neutrik HTLACA (5)

Torque Value 2.5 Nm (22 inch pound / 1.8 lb-ft)

Neutrik HTLACB (6)

Neutrik HTLACB

Hold the connector with the NEUTRIK tool (5) and tighten bushing with the NEUTRIK tool (6) as shown.

For an exact mounting position use a torque wrench with 27 mm (1 1/8 inch) hex bit (7) and tighten it with 2.5 Nm (22 inch pound / 1.8 lb-ft).

Important: Black O-ring to be covered by the bushing to achieve IP protection (8).

NEUTRIK tool:	(5)	HTLACA
	(6)	HTLACB

C FOR DISASSEMBLY

- Use the Neutrik tool HTLACB.
- Position the tool on the surfaces and open the clamping sleeve.

HTLACB

D SAFETY INFORMATION

CAUTION

To ensure protection category, do not expose the connection to bending forces (e.g. do not attach loads to the cable, no free-dangling cable windings etc.).

FORCE

SAFETY WARNING

For safety and certification reasons the connector must be replaced in case of any broken parts or excessive wear and tear.

E More Information on the www.neutrik.com